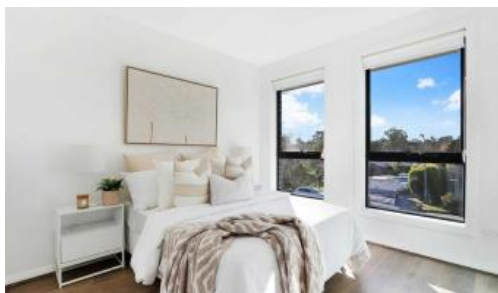


Sold

25 Large Street, Schofields



## In Ponds School Catchment: Walking Distance

Angel Properties is proud to present this sensational opportunity to own this beautiful and cozy home with modern layout throughout, situated in premium location of Schofields located within 2 km to the Schofield station, Woolworths and Schofields shopping centre. Also, short drive to the Tallawong Metro Station, The Ponds Shopping Centre, Rouse Hill Town Centre and Stanhope Village Shopping Centre.

This masterpiece is walking distance to Riverbank Public School

Features:

- Architecturally designed brand new dwellings
- Four bedroom all with built-in
- Master bedroom with ensuite
- Generous areas integrating open plan kitchen and dining area
- Well-appointed kitchen featuring stone benchtops, gas

🚗 4 🏠 2 🚲 1

**Price** SOLD for  
\$1,200,000

**Property Type** Residential

**Property ID** 1030

### Agent Details

Ashish Nanda - 0413070431

Arun Rangula - 0468439412

### Office Details

Angel Properties  
Unit 213 29-31 Lexington Dr  
Bella Vista, NSW, 2153  
Australia  
0413070431



cooktops, stainless steel appliances

- Ducted Air-Conditioning with 2 zones
- Remote garage, Security alarm, Smoke alarms, Video intercom
- Clothesline, Letterbox, Turf lawn



This fantastic opportunity won't last long. Contact Call Ashish Nanda on 0413070431

Display Townhouse available for inspection by private appointment.

#### DISCLAIMER:

All information contained herein is gathered from sources we deem to be reliable. However, we cannot guarantee its accuracy and interested persons should rely on their own enquiries. All images and plans are for illustration purpose only. Internal and external perspectives are representative images only "

The above information provided has been furnished to us by the vendor/s. We have not verified whether or not that information is accurate and do not have any belief in one way or the other in its accuracy. We do not accept any responsibility to any person for its accuracy and do no more than pass it on. All interested parties should make and rely upon their own inquiries in order to determine whether or not this information is in fact accurate.