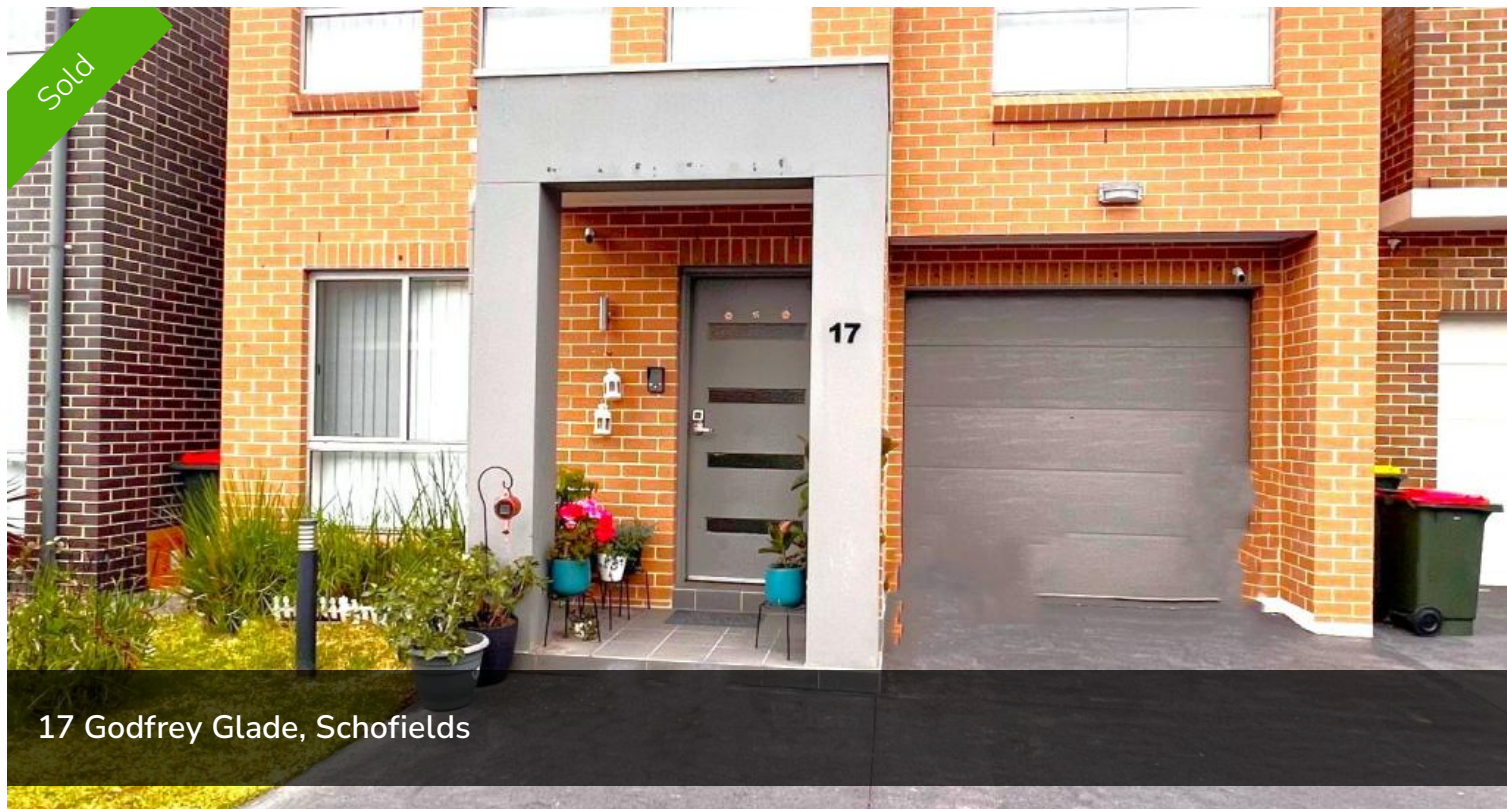
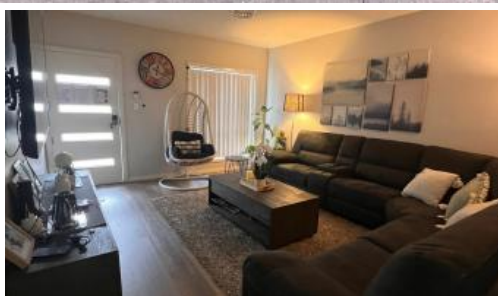


Sold



17 Godfrey Glade, Schofields



In Ponds School Catchment: East Facing Townhouse

Angel Properties is proud to present this sensational opportunity to own this beautiful and cozy East Facing Townhouse with modern layout throughout, situated in premium location of Schofields located within 2 km to the Schofield station, Woolworths and Schofields shopping centre. Also, short drive to the Tallawong Metro Station, The Ponds Shopping Centre, Rouse Hill Town Centre and Stanhope Village Shopping Centre.

4 Bedroom, 2.5 Bath, 1 Garage (Converted to office but can be used as Car Garage) + 1 Private Car Space

This masterpiece is in Catchment of Riverbank Public School and Ponds High School

🚗 4 🏠 2 🚗 3

Price	SOLD
Property Type	Residential
Property ID	356

Agent Details

Ashish Nanda - 0413070431

Office Details

Angel Properties
Unit 213 29-31 Lexington Dr
Bella Vista, NSW, 2153
Australia
0413070431



Features:

- Architecturally designed brand new dwellings
- Four bedroom all with built-in (Refer attached floor plan for Big size rooms)
- Master bedroom with ensuite: 4.1 mx 4.4m- as per floor plan
- Generous areas integrating open plan kitchen and dining area
- Well-appointed kitchen featuring stone benchtops, gas cooktops, stainless steel appliances
- Ducted Air-Conditioning with 2 zones
- Remote garage, Security alarm, Smoke alarms, Video intercom
- Clothesline, Letterbox, Turf lawn

- Garage is converted in office with AC and flooring

- 1 x Private Car park

This fantastic opportunity won't last long. Contact Call Ashish Nanda on 0413070431

Display Townhouse available for inspection by private appointment.

DISCLAIMER: (AGENT INTEREST)

All information contained herein is gathered from sources we deem to be reliable. However, we cannot guarantee its accuracy and interested persons should rely on their own enquiries. All images and plans are for illustration purpose only. Internal and external perspectives are representative images only "

Property Code: 356

Property Code: 356

The above information provided has been furnished to us by the vendor/s. We have not verified whether or not that information is accurate and do not have any belief in one way or the other in its accuracy. We do not accept any responsibility to any person for its accuracy and do no more than pass it on. All interested parties should make and rely upon their own inquiries in order to determine whether or not this information is in fact accurate.

