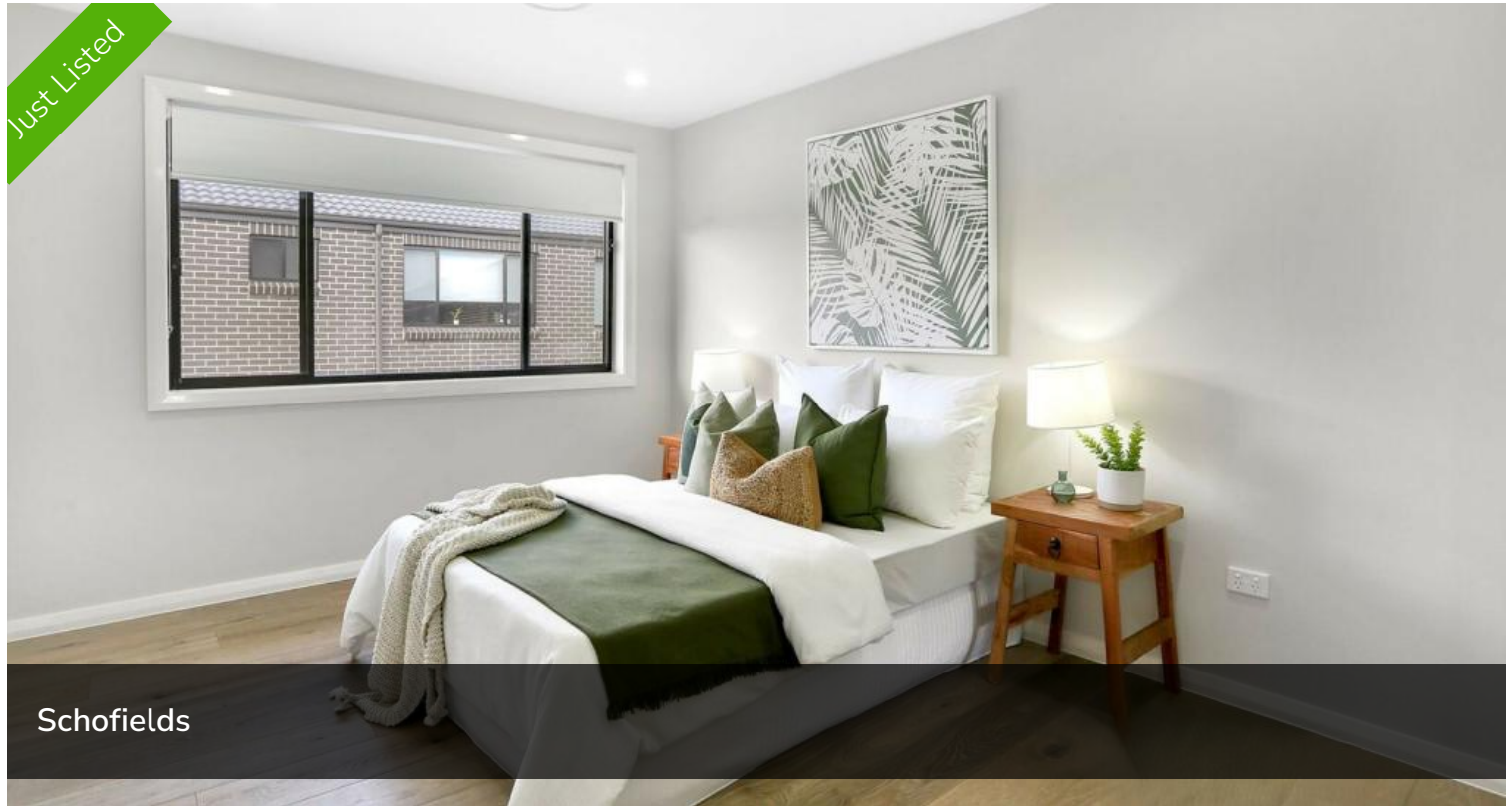


Just Listed



Schofields



## Torrens Title for Sale

🏠 4 🚗 3 🚲 2

Brand New Duplex house - Torrens Title

Angel Properties is proud to present this sensational opportunity to own this beautiful and cosy home with a modern layout throughout, situated in the premium location of Schofields located within 2 km of the Schofield station, Woolworths and Schofield's shopping centre.

Also, it is a short drive to the Tallawong Metro Station, The Ponds Shopping Centre, Rouse Hill Town Centre and Stanhope Village Shopping Centre. This masterpiece is within walking distance of Riverbank Public School and Ponds High School

Features:

- Kitchen with 40 mm Stone bench top, plenty of storage space & quality stainless steel appliances including dishwasher, rangehood

CALL US NOW TO

**Price** BOOK YOUR  
INSPECTION

**Property** Residential  
**Type**

**Property** 9880  
**ID**

### Agent Details

Ashish Nanda - 0413070431

### Office Details

Angel Properties  
Unit 213 29-31 Lexington Dr  
Bella Vista, NSW, 2153  
Australia  
0413070431

and Oven

- 4 generous bedrooms all with built-ins, the master bedroom boasts a private ensuite
- Ensuite and built-in robe to master bedroom
- Full height tiling to a bathroom and ensuite
- Ducted reverse cycle air conditioning
- Semi-framed mirrored sliding doors to wardrobes including internal shelves with hanging rail
- Gas hot water system, window furnishings, alarm system & video Intercom
- Automatic garage with internal access.
- Storage space, landscaping, and fencing
- Driveway, Turf, Letterbox & Clothesline

To arrange a private inspection, please contact: Ashish Nanda - 0413070431

Display house available for inspection by private appointment.

Check our website and follow us on Facebook to stay updated with more options.

Disclaimer: The above information has been gathered from sources that we believe are reliable. However, we cannot guarantee the accuracy of this information and nor do we accept responsibility for its accuracy. Any interested parties should rely on their own enquiries and judgment to determine the accuracy of this information for their own purposes. Images are for illustrative and design purposes only and do not represent the final product or finishes.

Images and Panorama are from the developer's other similar 4-bedroom townhouse and for reference only.

\*Images and 3D walkthrough link for illustrative purposes only and may include examples of upgrade options\*

Subject to the provisions of the Trade Practices Act, 1974 and



subject to any other statutory provisions which cannot be excluded, Angel Real Estate for themselves, and associated Companies and for the Vendors of any property for whom they act, give notice that:

1. The information contained in this document is subject to change without notice and should be regarded as indicative only;
2. The figures quoted for rents, strata levies and rates are estimates only;
3. Intending purchasers should not rely on any representations contained in this document and should rely only upon the contents of any contract for sale in relation to any property to be acquired;
4. Intending purchasers should satisfy themselves as to the truth or accuracy of any information contained in this document through their own inspections, searches, inquiries, and professional legal and accounting advice.
5. All building designs and pricing are estimates only and subject to change without notice. All drawings and images are for illustrative purposes only and should be used as a guide only.

The above information provided has been furnished to us by the vendor/s. We have not verified whether or not that information is accurate and do not have any belief in one way or the other in its accuracy. We do not accept any responsibility to any person for its accuracy and do no more than pass it on. All interested parties should make and rely upon their own inquiries in order to determine whether or not this information is in fact accurate.